

FLAT ROOF SOLUTION



CREOFLEX

Manufactured by Session Solar

- Fast, Clampless Mounting
- Flexible and Adjustable Design
- Less Parts, Less Labor, More Savings

CreoTecc
SOLAR MOUNTING SYSTEMS

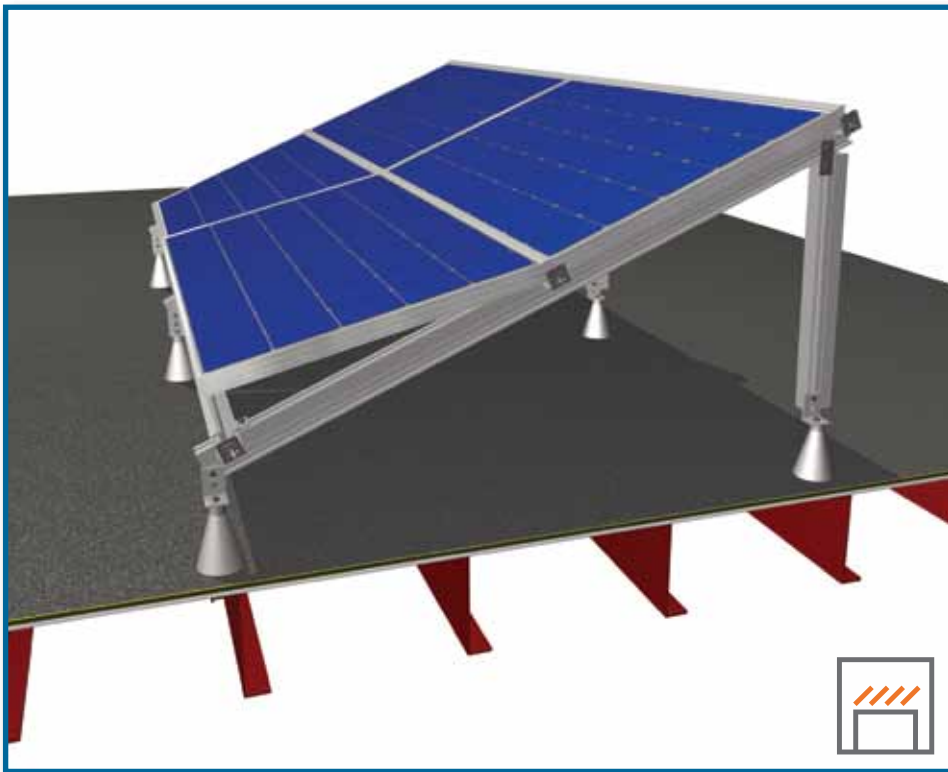


FLAT ROOF SOLUTION

Save time and money with our advanced mounting system—CreoFlex, featuring our AluTec insertion rail. Designed by and for installers, CreoFlex is easy to use and adaptable for onsite configuration. Compatible with all common roof attachments and modules, CreoFlex is manufactured by Session Solar in the USA.

FEATURES OF CREOFLEX

- Configurable tilt and spacing for all roof conditions
- Longer rail spans reduce costly roof penetrations
- Minimal parts and tools required
- Easy to install, saving both time and labor
- Code compliant— 10 year limited warranty



Modules are inserted between parallel horizontal rails. Just place the panel into the top rail, let it slide down and the job is done!

With solutions for pitched roofs, flat roofs, and ground mounts, CreoTecc mounting systems feature the revolutionary AluTec insertion rail, which eliminates the need for clamps and accelerates module installation times. CreoTecc mounting systems are manufactured by Session Solar in the USA. For more information visit www.sessionsolar.com/creotecc

CreoTecc
SOLAR MOUNTING SYSTEMS



(831) 438-9000 | info@sessionsolar.com | www.sessionsolar.com
USA ■ Germany ■ Czech Republic ■ Switzerland ■ Italy ■ Spain